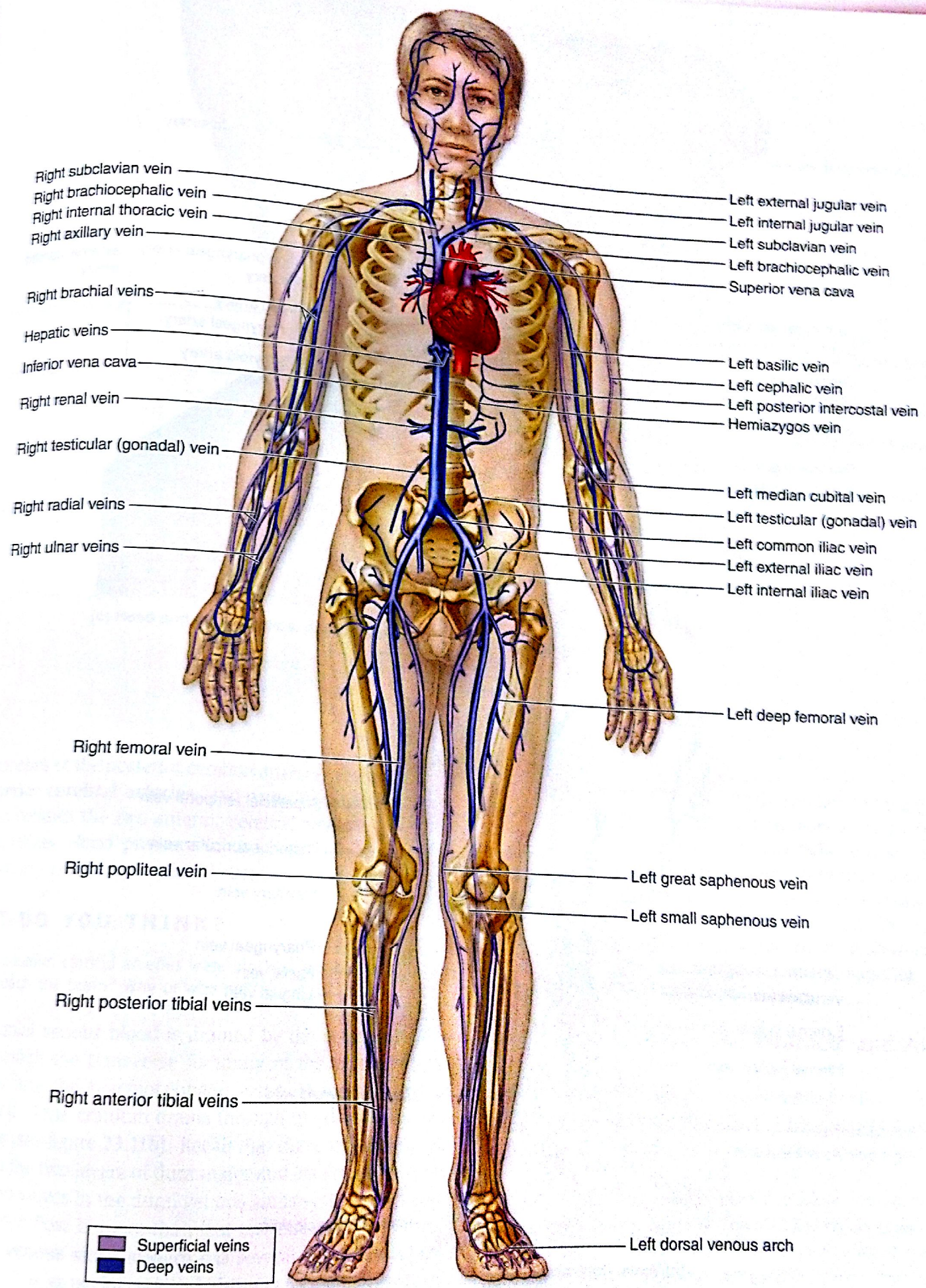


(a) Arteries, anterior view

**Figure 23.9**

**General Vascular Distribution.** Arteries in the systemic circulation carry blood from the heart to systemic capillary beds; systemic veins carry this blood to the heart. (a) Anterior view of the systemic arteries. (b) Anterior view of the systemic veins.





Right subclavian vein  
 Right brachiocephalic vein  
 Right internal thoracic vein  
 Right axillary vein  
 Right brachial veins  
 Hepatic veins  
 Inferior vena cava  
 Right renal vein  
 Right testicular (gonadal) vein  
 Right radial veins  
 Right ulnar veins

Left external jugular vein  
 Left internal jugular vein  
 Left subclavian vein  
 Left brachiocephalic vein  
 Superior vena cava  
 Left basilic vein  
 Left cephalic vein  
 Left posterior intercostal vein  
 Hemiazygos vein  
 Left median cubital vein  
 Left testicular (gonadal) vein  
 Left common iliac vein  
 Left external iliac vein  
 Left internal iliac vein

Right femoral vein  
 Right popliteal vein  
 Right posterior tibial veins  
 Right anterior tibial veins

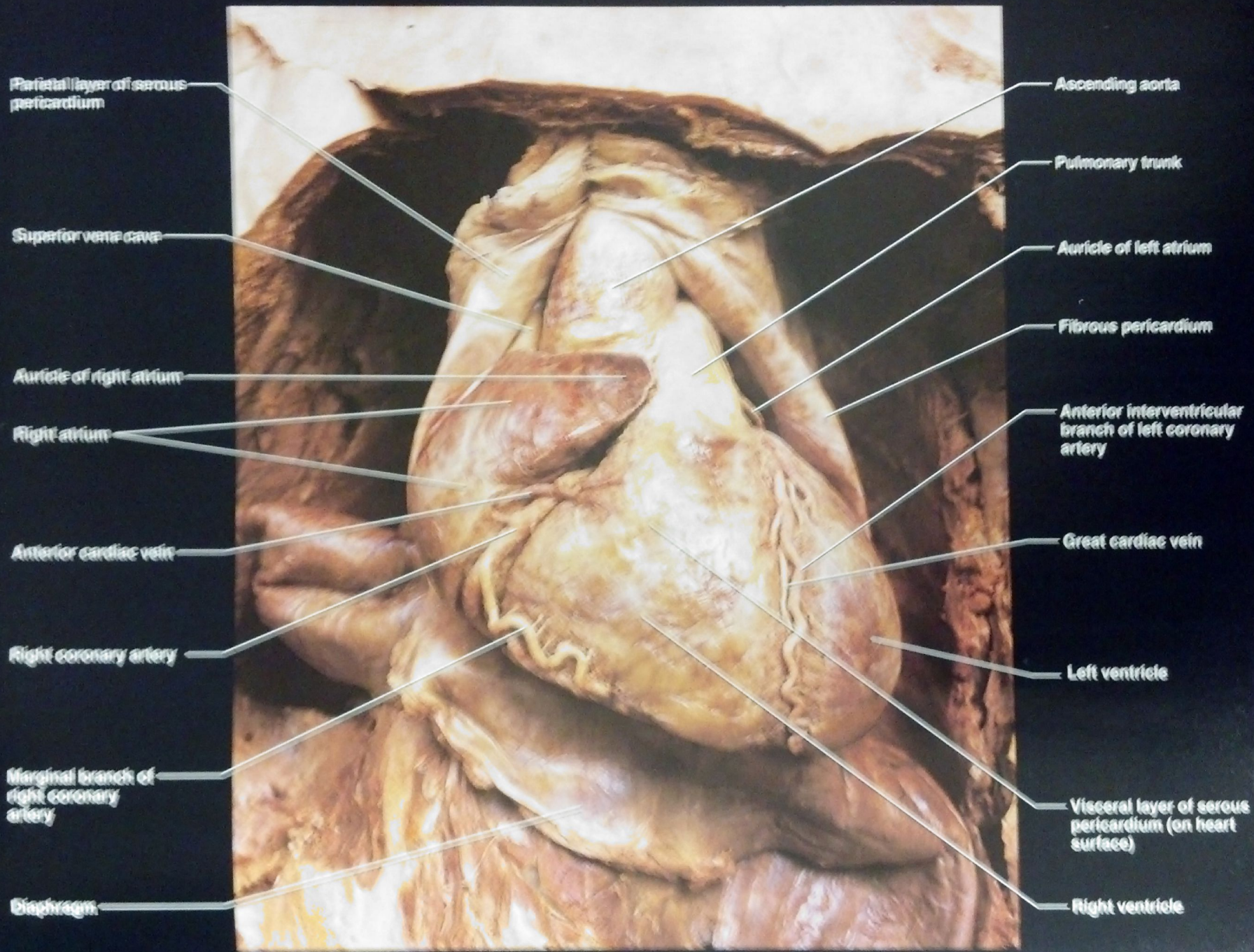
Left deep femoral vein  
 Left great saphenous vein  
 Left small saphenous vein

Left dorsal venous arch

Superficial veins  
 Deep veins

(b) Veins, anterior view





**Figure 47** Heart and pericardium, anterior view.