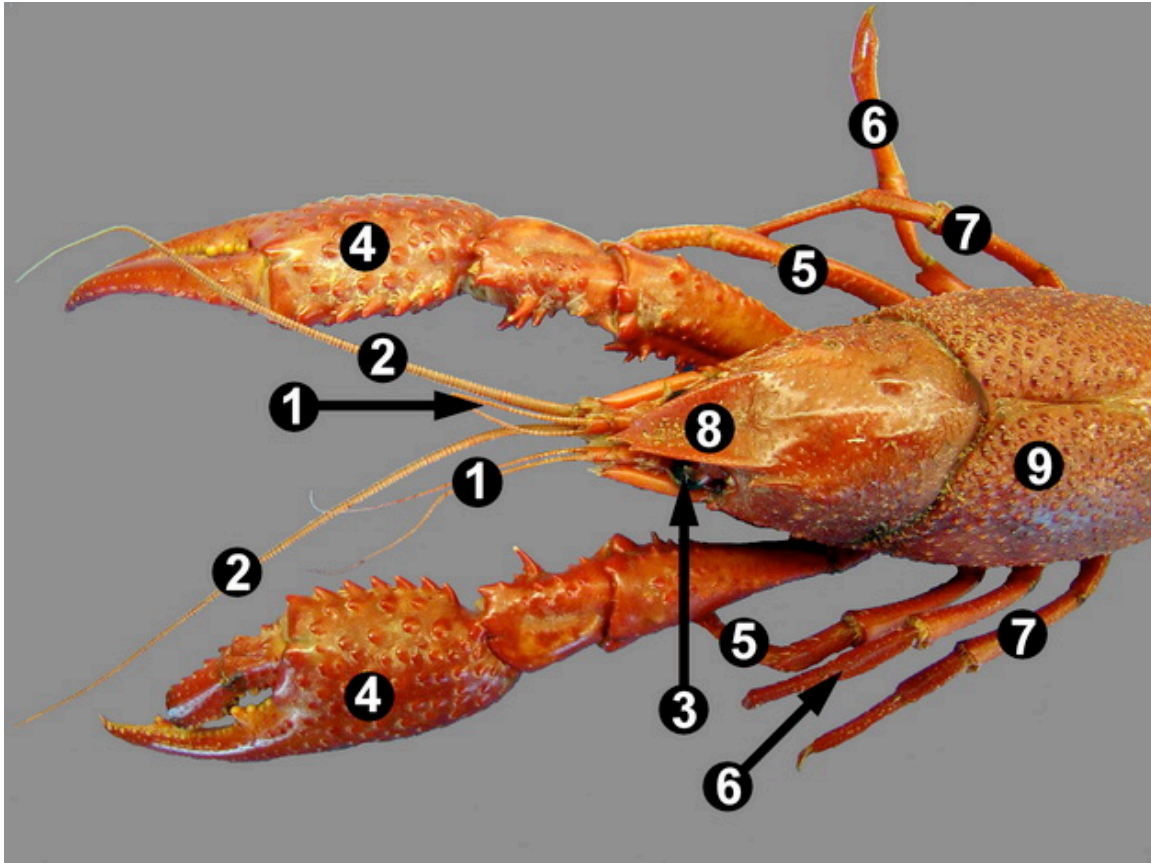


External Anatomy: Anterior



The above image shows a dorsal view of the anterior half of a preserved crayfish. Note again that the cephalothorax of this decapod crustacean is covered by a tough carapace (9) that terminates anteriorly in a pointed rostrum (8). Also seen on the image are the antennules (1), antennae (2), compound eye (3) as well as the first pair of walking legs called chelipeds (4) as well as the second (5), third (6) and fourth (7) pairs of walking legs.