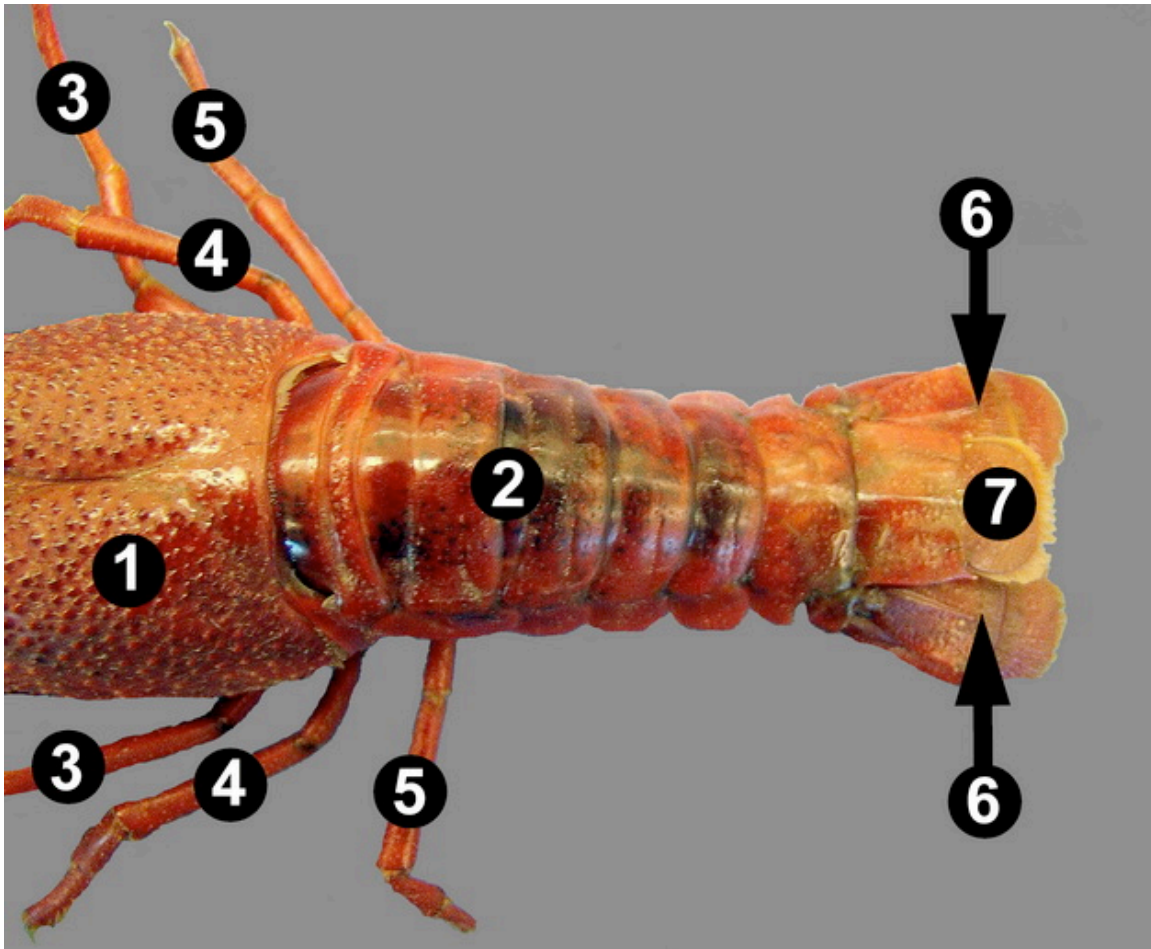


External Anatomy: Posterior



The above image shows a dorsal view of the posterior half of a preserved crayfish. Behind the cephalothorax that is composed of a tough, chitinous carapace (1) is the segmented abdomen (2), which terminates in an unpaired telson (7) that along with the paired uropods (6) make up the tail fan of the crayfish. Also seen on the image are portions of the third (3), fourth (4) and fifth (5) pairs of walking legs.