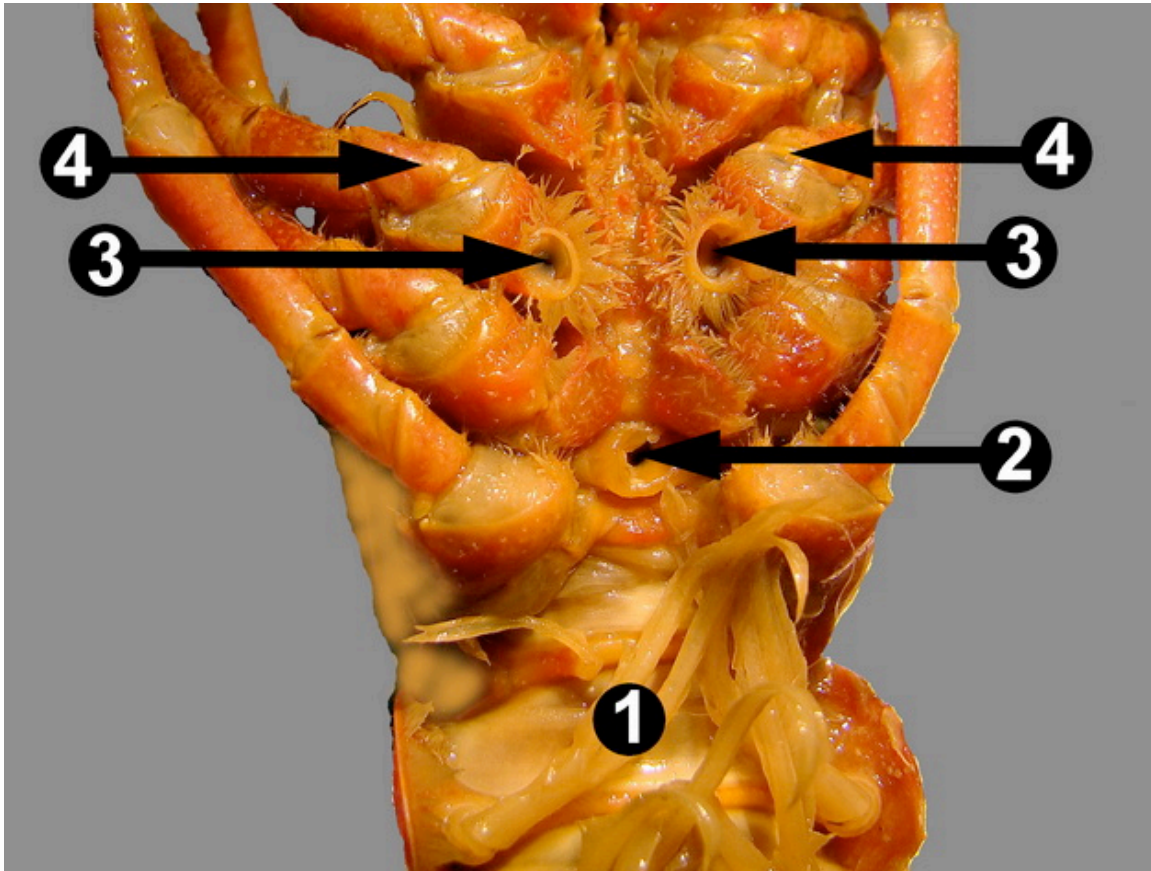


From University of Wisconsin, La Crosse, ZOO Lab 8: Arthropods

<http://www.uwlax.edu/Biology/Zoo-lab/Lab-8--Arthropods/>

Female Crayfish ventral view



This image shows a ventral view of a female preserved crayfish. Unlike in males where the first and second pair of swimmerets are stout, forward facing structures, all of the swimmerets (1) of the female are soft and somewhat translucent. On the female crayfish observe the opening to the seminal receptacle (2), which receives sperm from the male, as well as the openings to the oviducts (3), which are located at the bases of the third pairs of walking legs (4). Note: These openings have been expanded to make them more visible.