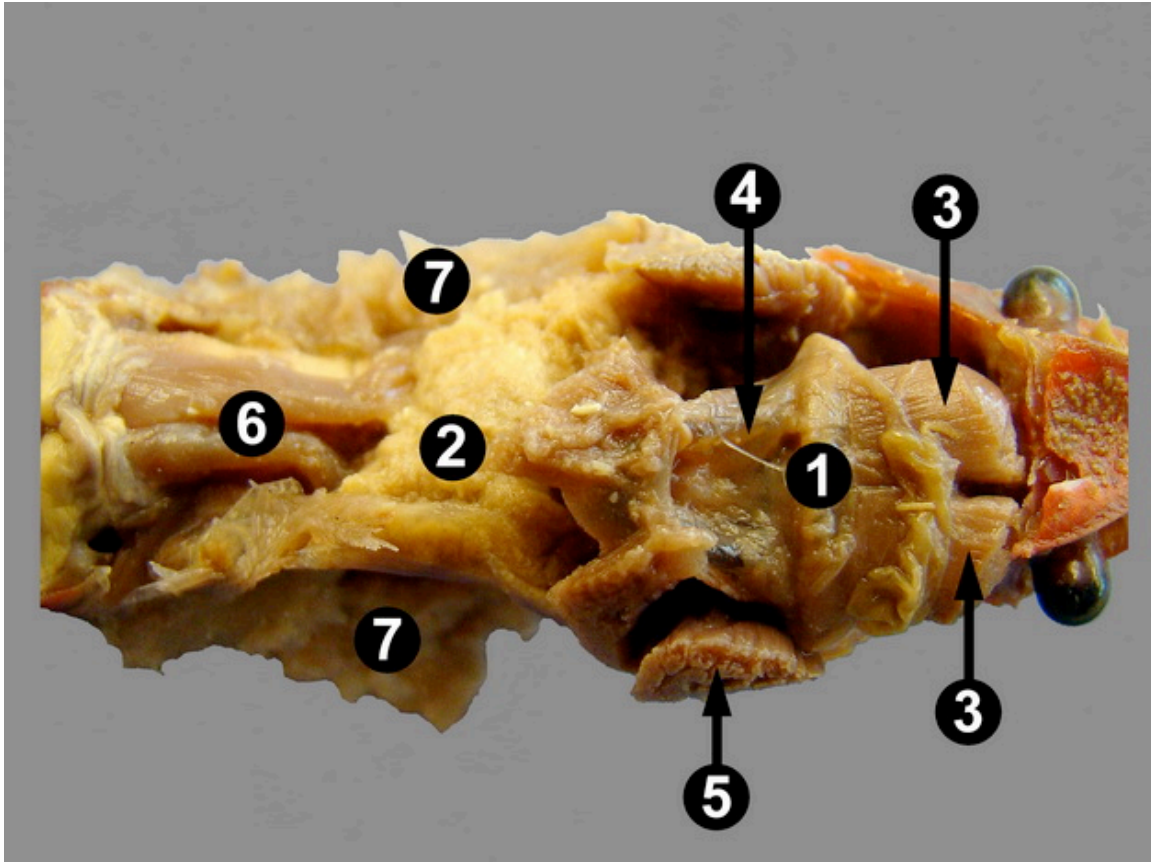


From University of Wisconsin, La Crosse, ZOO Lab 8: Arthropods

<http://www.uwlax.edu/Biology/Zoo-lab/Lab-8--Arthropods/>

Internal Anatomy: Dorsal Anterior



This image shows a dorsal view of the anterior half of a preserved crayfish with the carapace removed. Labeled structures include the stomach (1), digestive glands (2), anterior gastric muscles (3), one of the posterior gastric muscles (4), one of the two sets of mandibular muscles (5), the heart (6) and gills (7) that have been deflected to the sides to make the other structures more visible.