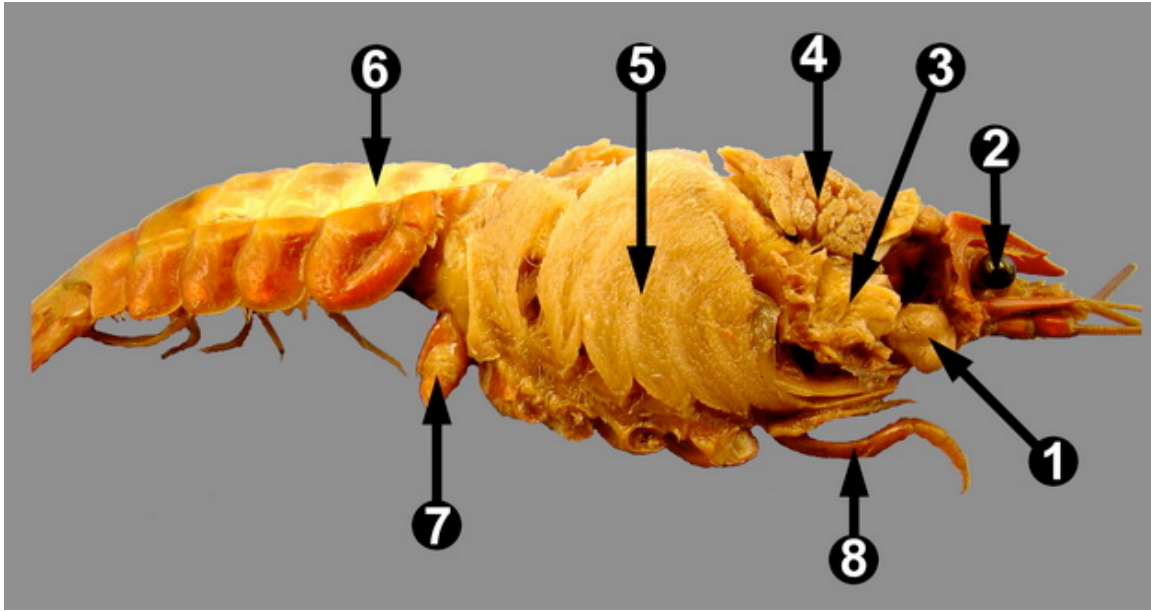


From University of Wisconsin, La Crosse, ZOO Lab 8: Arthropods

<http://www.uwlax.edu/Biology/Zoo-lab/Lab-8--Arthropods/>

Internal Anatomy: Lateral



This lateral view of the left side of a preserved crayfish with the carapace removed shows some of the features of the internal anatomy of this crustacean. Labeled structures include one of the two green glands (1) that function in osmoregulation and excretion, one of the compound eyes (2), the digestive gland (3), one of the two sets of mandibular muscles (4) that control the mandibles, the gills (5), a portion of the abdominal extensor muscle (6), a portion of the fifth walking leg (7) and one of the third maxillipeds (8). To see a magnified view of the anterior portion of the crayfish showing some of the same structures, see below.