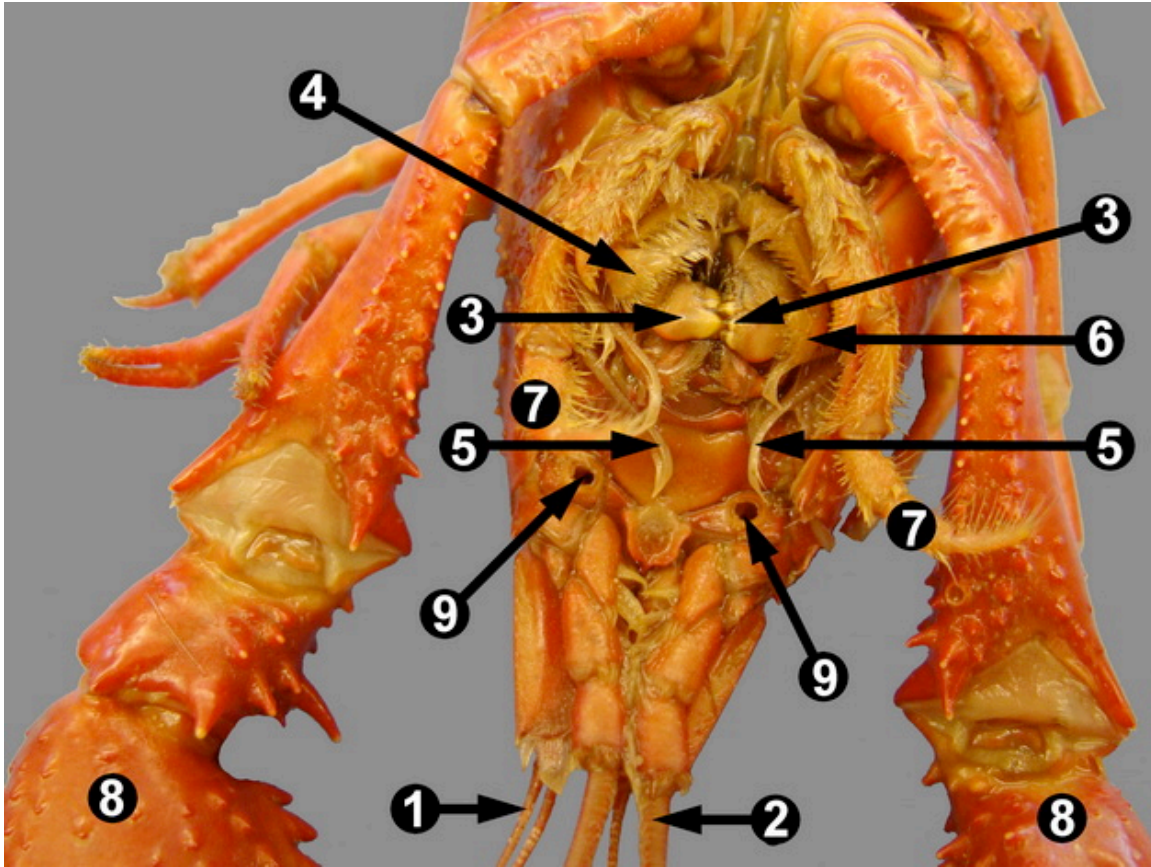


External Anatomy: Mouth Parts



The above image shows a ventral view of the mouth region of preserved crayfish. Paired appendages that can be seen include the antennules (1), antennae (2), mandibles (3) that are used to chew and crush food, one of the second maxillae (4) that along with the first maxillae (covered by these structures) are involved in food handling, the flagella-like tips of the first maxillipeds (5), most of which are covered by the carapace, one of the second maxillipeds (6), the third maxillipeds (7) and the first pair of walking legs, which are called chelipeds (8). Also seen on the image are the openings to the green glands (9) that have been opened with a probe to make them more visible.