

Nutritional Adaptations in Animals

Activity #4

Mammalian Skulls

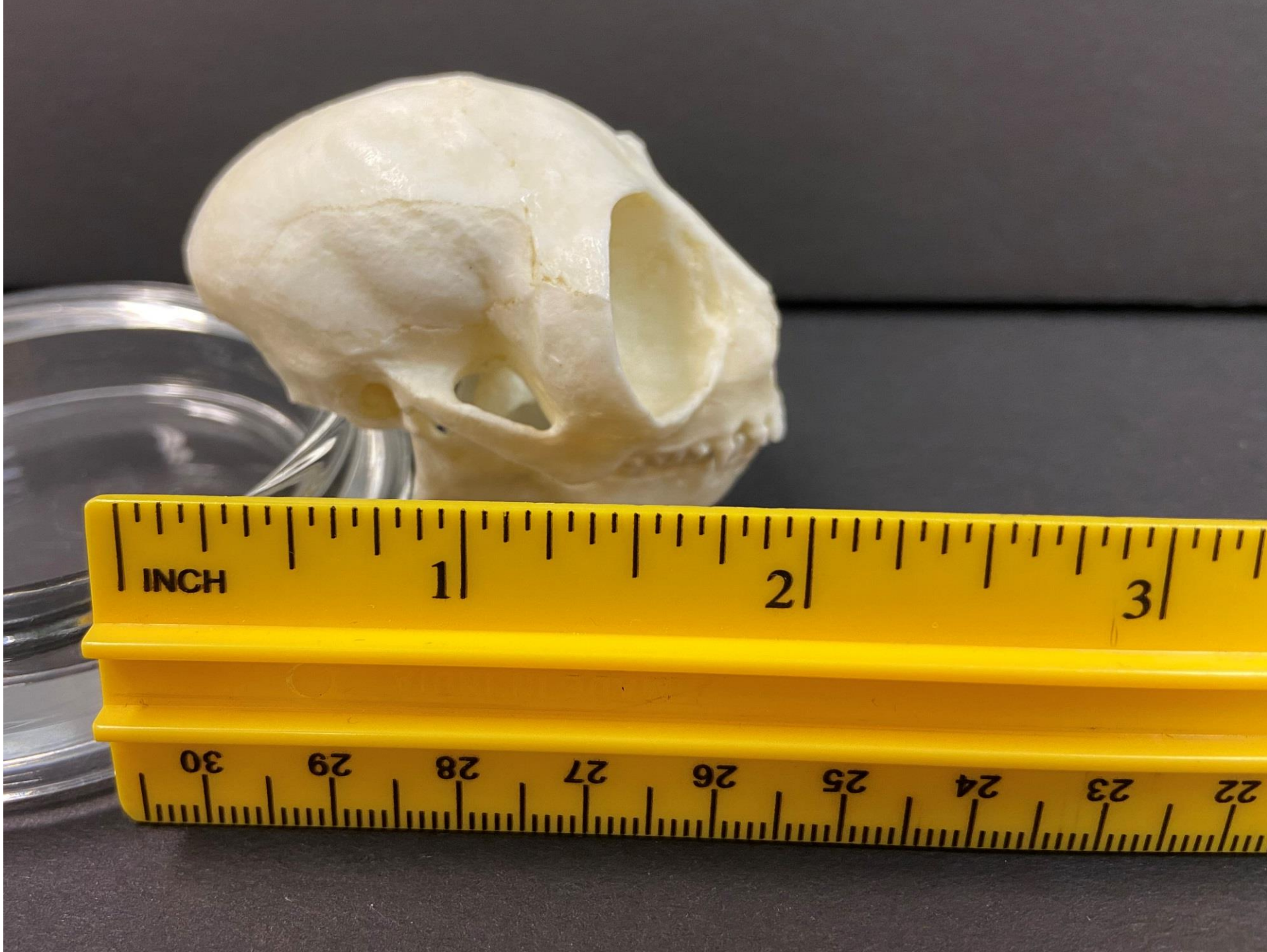
Specimen A

Skull Views:

1. Frontal
2. Sagittal (left view)
3. Sagittal (right view)
4. Mandible (right view)
5. Mandible (top view)
6. Transverse (ventral)
7. Transverse (ventral with mandible)
8. Occipital

















Specimen B

Skull Views:

1. Frontal
2. Sagittal (left view)
3. Sagittal (right view)
4. Mandible (right view)
5. Transverse (ventral)
6. Transverse (ventral – close up of teeth)
7. Transverse (ventral with mandible)
8. Coronal
9. Occipital

















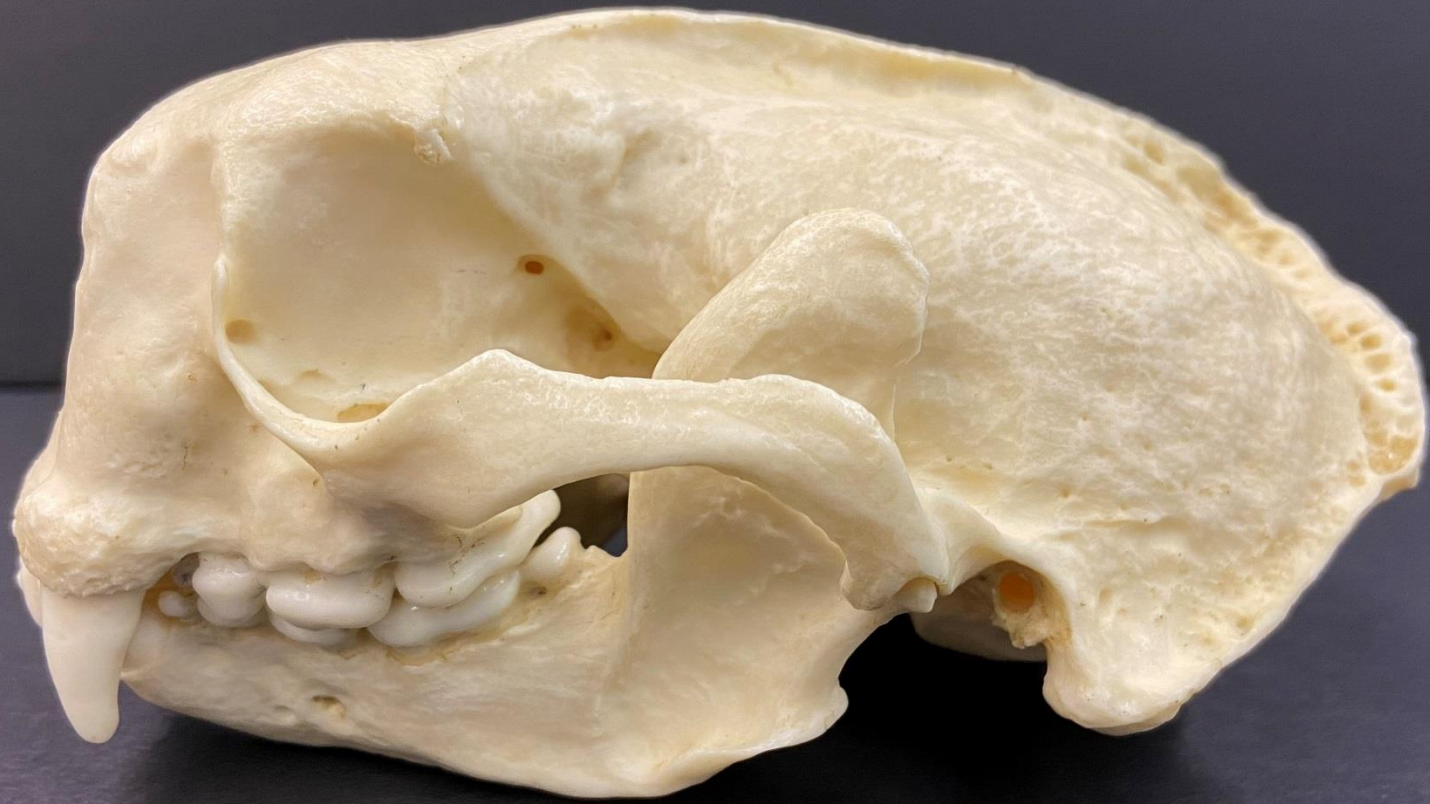


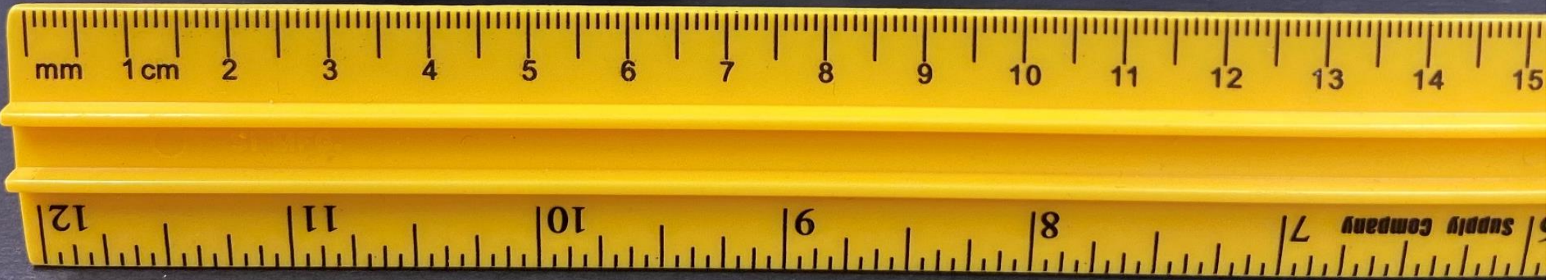
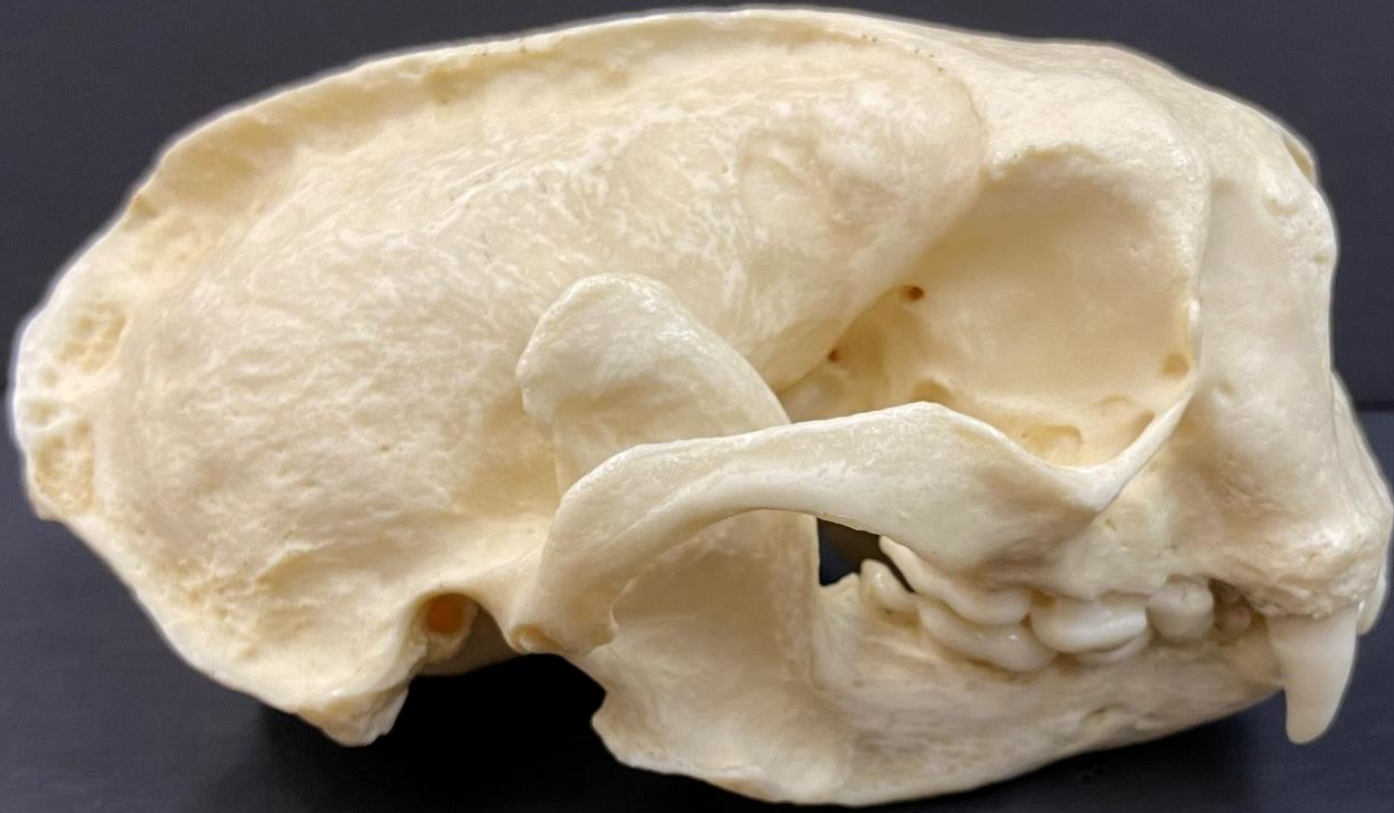
Specimen C

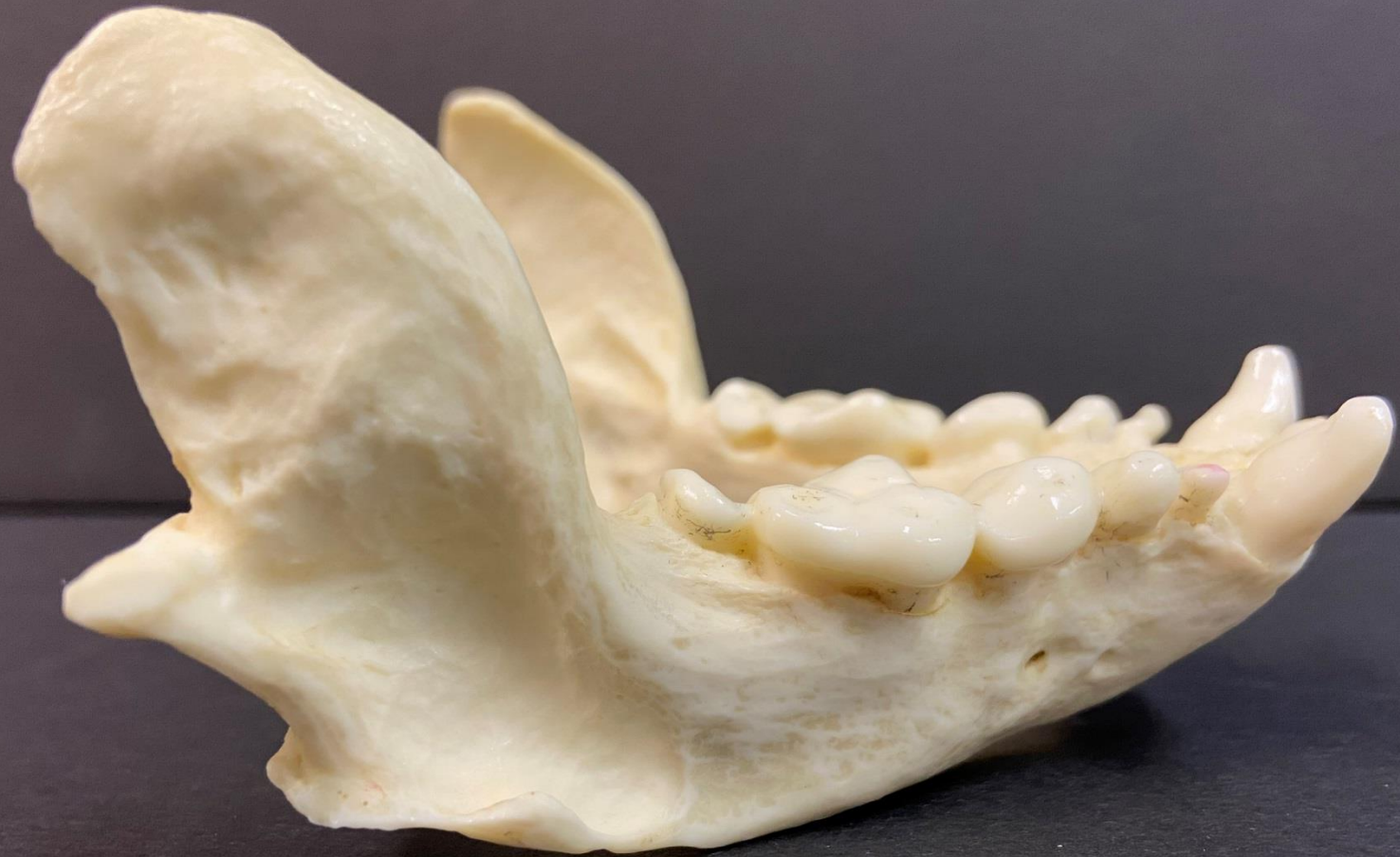
Skull Views:

1. Frontal
2. Sagittal (left view)
3. Sagittal (right view)
4. Mandible (right view)
5. Mandible (top view)
6. Transverse (ventral)
7. Transverse (ventral with mandible)
8. Coronal
9. Occipital



















Specimen D

Skull Views:

1. Frontal
2. Frontal (left angle view)
3. Sagittal (left view)
4. Sagittal (right view)
5. Mandible (right view)
6. Transverse (ventral)
7. Transverse (ventral – close up of teeth)
8. Coronal
9. Occipital



















Specimen E

Skull Views:

1. Sagittal (left view)
2. Sagittal (right view)





Specimen F

Skull Views:

1. Frontal
2. Sagittal (left view)
3. Sagittal (right view)
4. Mandible (right view)
5. Transverse (ventral)
6. Transverse (ventral – close up of teeth)
7. Transverse (ventral with mandible)
8. Coronal
9. Occipital

















